

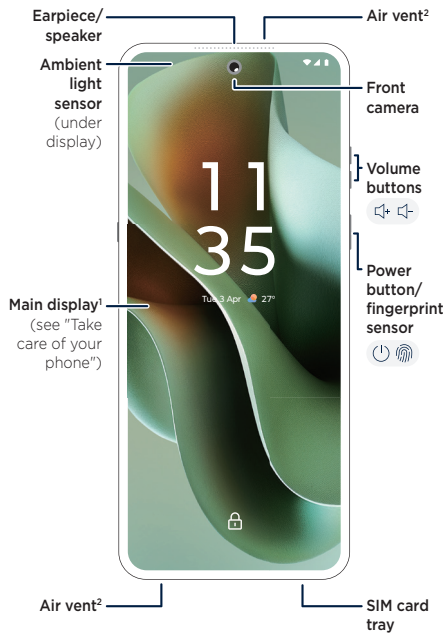
RQZR 60 ULTRA



Read me
English (en-GB)



Phone open

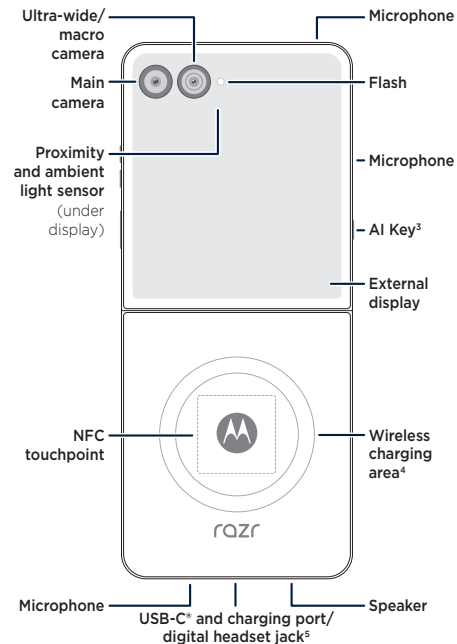


¹Protect your main display: please do not remove the attached screen protector or use third-party screen protectors. Doing so will void the device warranty.

²Air vent: to prevent noise during calls or media playback, ensure protective accessories like films, covers and their adhesives do not obstruct the air vent hole.



Phone back



³AI Key: to customise your AI Key, from the Home screen, swipe up and tap **Settings > Gestures > AI Key**.

⁴Wireless charging: charge your phone using a Qi-certified wireless charger (may be sold separately).

⁵Use a digital headset: to use a digital headset, you'll need one with a USB-C connector. If you're using a 3.5mm headset, you'll need a 3.5mm to USB-C digital headset adapter to connect it. Headset and adapter may be sold separately.



With **moto** care, extend your warranty coverage up to three years, and take advantage of features like accidental damage protection. Visit: motorola.com/motocare (UK and Ireland only)



motorola.com



SSC8E69746-B



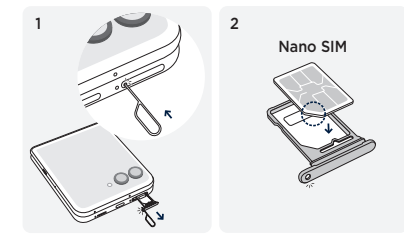
Printed in China

Put in the card

1 **With the phone closed and the external display facing up**, insert the SIM tool into the SIM card tray hole to pop out the tray.

Make sure you use a standard nano SIM card and don't cut the SIM card.

2 Insert the SIM card with the gold contacts up and the notch aligned with the card tray, then gently push the tray into the slot.



eSIM option: your phone may support an eSIM (embedded SIM card) in addition to the physical SIM card. Contact your service provider for details if you want to activate and use it.

Power on and off

- Press and hold the power button to turn on your phone, then follow the prompts to get started.
- To turn off your phone, press the power and volume up buttons + at the same time.

Scan with your **Camera** app for how-to videos. Or visit motorola.com/razr60ultra/row



Take care of your phone

To guarantee your warranty service and ensure you have a satisfying phone experience, please care for your phone as follows:

Don't use third-party screen protectors. Your phone comes with a Motorola-developed screen protector customised to Razr's unique foldable design. The Motorola screen protector is of superior quality and preserves the predicted service life of your phone. In contrast, using third-party screen protectors may reduce your phone's screen sensitivity, cause the main display to become unresponsive, damage the screen or cause other touchscreen problems. In such cases, Motorola reserves the right to evaluate the situation and decide whether to provide you with free-of-charge warranty service during the remaining warranty period.

Contact an authorised Motorola service centre if your screen protector has air bubbles, warps or separates from the main display during use. We may replace the screen protector because a compromised screen protector can damage the main display and shorten the service life of the phone.

If damaged, the screen protector on your phone can be replaced by suitably competent individuals following Motorola-approved repair and service manuals or by Motorola-approved service personnel. Motorola recommends that the screen protector is replaced by Motorola-approved service personnel in order to avoid screen damaging and warranty avoidance.

Take care not to physically damage your phone. Don't puncture or apply excessive force to the main display with a hard or sharp object while carrying your phone. Before closing the phone, always ensure there are no obstructions between the screens or hinges. Items such as cards, coins, keys and other objects can damage your screen or prevent your phone hinge from closing properly. Don't use excessive force to press the middle area of the screen. Avoid exposing your phone to water, coffee or other liquids. Also, don't expose your phone to tiny pieces of debris, such as grit.

Important: this product contains magnets. Always keep products with magnets more than 20cm from medical devices, such as pacemakers, internal cardio defibrillators or other devices that can be affected by a magnetic field. Also, keep away from credit cards, ID cards and other media that use magnetically encoded information.

Reminder: the crease at the bend on the main display and the faint noise you may hear while flipping open the phone are part of the design and do not impact product durability.

Help and more

Get answers, updates and info:

- **Help is here:** from the Home screen, swipe up and tap **Settings** > **Help** to learn how to use your phone and get support.
- **Get more:** get software, user guides and more at www.motorola.com/myrazr.
- **Connect with 5G:** 5G service plan and 5G network coverage required; available only in selected areas; device not compatible with all 5G networks. Contact your service provider for details.
- **Energy label:** the energy label and product information defined within Regulation (EU) 2023/1669 is available at <https://eprel.ec.europa.eu/screen/home>.

Legal information. This guide provides important legal, safety and regulatory information that you should read before using your product. For the complete legal information, from the Home screen, swipe up and tap **Settings** > **Q**, then type **Legal information** or visit www.motorola.com/device-legal.

Dust and water resistance. For detailed information about your phone's dust and water resistance design and care tips, swipe up and tap **Settings** > **Help** or refer to the *User Guide*.

Charging and battery safety. The battery in your phone can be removed by suitably competent individuals following Motorola-approved repair and service manuals. To prevent possible burning and injury, always follow the instructions provided. If your phone becomes unresponsive, press and hold the power button until the screen goes dark and your phone restarts.

The phone supports QC and USB PD fast charging. The power delivered by the charger must be between min 5 Watts required by the radio equipment, and max 68 Watts in order to achieve the maximum charging speed. For the fastest charging speed, choose a Motorola 68W or higher USB-C PD (Power Delivery) charger (may be sold separately) with the included PD cable. Use of other chargers is not recommended and may impair the charging performance. Chargers that do not comply with applicable national standards may be unsafe, with risk of death or injury, and may cause slow charging or product damage. Don't charge your phone in temperatures below -20°C or above 45°C. To view applicable standards and to learn more, see the "Legal information" section of this guide or visit www.motorola.com/device-legal.

Warning about high volume usage. To prevent possible hearing damage, do not listen at high volume levels for long periods. When your headset volume reaches the high volume threshold, a warning will be shown. Tap **OK** to dismiss it, or wait one to five seconds, then press the volume up button to dismiss the alert and enable the volume to continue to be adjusted.

Disposal and recycling. Don't dispose of your battery or mobile device with your household waste. For help recycling products and packaging responsibly, visit www.motorola.com/recycling.

Class 1 Laser. This device is classified as a Class 1 Laser product, which is safe in normal use per IEC60825-1:2014. This device complies with 21 CFR 1040.10 and 1040.11, except for conformance with IEC60825-1:2014, as described in Laser Notice No.56, dated 8 May 2019. Do not attempt to modify or disassemble.

Extreme heat or cold. Don't use your phone in temperatures below -20°C or above 45°C. Don't store or transport your phone in temperatures below -20°C or above 60°C.

Legal disclaimers. Features, services and applications are network dependent and may not be available in all areas; additional terms/charges may apply. Product specifications and other information contained in this guide are believed to be accurate at the time of printing or release. Motorola reserves the right to correct or change any information without notice.

Arbitration. Your purchase is governed by a binding arbitration clause. For more information and how to opt out, see the legal guide that came with your phone.

SAR information (on e-label). To view specific absorption rate (SAR) values for this phone, from the Home screen, swipe up and tap **Settings** > **Q**, then type **Regulatory labels**, from your phone's dial pad, type ***#07#**, or visit www.motorola.com/sar.

Supported frequencies and power (Model XT2551-6). This phone is capable of operation on the following frequencies, subject to location and network availability.

Operating mode	Frequency range MHz/band	Maximum nominal transmit power dBm
Bluetooth	2400-2483.5	20 dBm EIRP
Wi-Fi	2400-2483.5	20 dBm EIRP
Wi-Fi	5150-5250/5945-6425	23 dBm EIRP
Wi-Fi	5250-5350/5470-5725	20 dBm EIRP
Wi-Fi	5725-5850	14 dBm EIRP
NFC	13.56	-18.31 dBuA/m @ 10m
WPT	110-148 kHz	0.32 dBuA/m @ 10m
GNSS	1164-1215/1559-1610	N/A
UWB	6489.5 and 7987.2	0 dBm
GSM	2/3/5/8	33/30*
UMTS	1/2/4/5/8	24
LTE	1/2/3/4/5/7/8/12/13/14/17/18/19/20/25/26/28/29/30/32/34/38/39/40/41/42/43/48/66/71	23/26*
5G	n1*/2*/3*/5/7/8/12/14/20/25*/26/28/29/30/38/40/41*/48/66*/70/71/75/77*/78*	23/26*

Copyright and trademarks. MOTOROLA, the stylised M logo, MOTO and the MOTO family of marks are trademarks or registered trademarks of Motorola Trademark Holdings, LLC. USB Type-C® and USB-C® are registered trademarks of USB Implementers Forum. All other product or service names are the property of their respective owners.

© 2025 Motorola Mobility LLC. All rights reserved.
Product ID: **motorola razr 60 ultra** (Model XT2551-6)
Manual Number: SSC8E69746-B